

INOX



INOX 80-100S

GENERALITA' / FEATURES

Elettropompe autoadescenti tipo Jet indicate per aspirazioni fino a 8/9 metri di profondità specialmente in presenza di acque miscelate a gas. La pompa è integrabile con un box (Garden Inox) in materiale termoplastico e antiurto che ricopre completamente il motore e parte del corpo pompa.

Self-priming Jet-type electric pumps, suitable for suction up to 8/9 metres especially when water may be mixed with gas. It can be supplied with a thermoplastic crash-proof material box (upon request), fully covering the motor and partially the pump body.

MATERIALI / MATERIALS

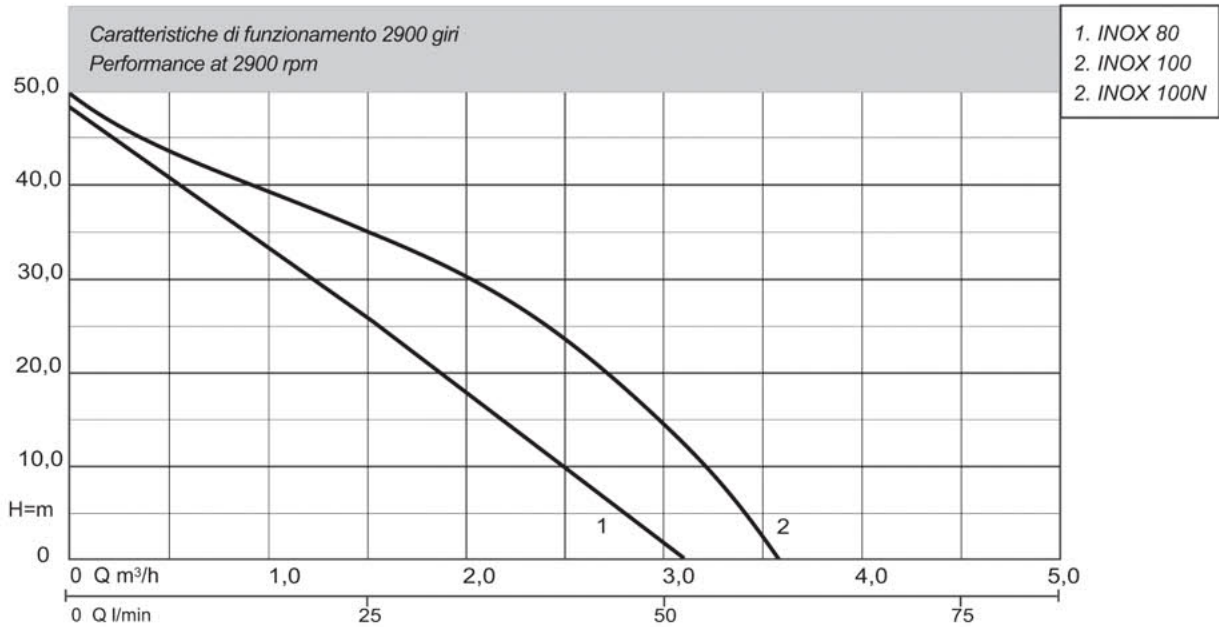
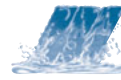
- Corpo pompa: acciaio AISI 304
 - Supporto: lega di alluminio
 - Albero motore: acciaio inox AISI 416
 - Girante: Noryl® o acciaio su richiesta
 - Diffusore e sistema Venturi: Noryl®
 - Tenuta meccanica in ceramica grafite
-
- *Pump body: stainless steel AISI 304*
 - *Motor bracket: aluminium alloy*
 - *Shaft: stainless steel AISI 416*
 - *Impeller: Noryl® or stainless steel (upon request)*
 - *Diffuser and Venturi system: Noryl®*
 - *Ceramic graphite mechanical seal*

MOTORE / MOTOR

- Motore chiuso autoventilato
 - Grado di protezione: IP44
 - Alimentazione monofase 230V-50Hz, con protezione termica e condensatore permanentemente inserito
 - Isolamento classe F
 - Alimentazione trifase 230/400V-50Hz con protezione a cura dell'utilizzatore
-
- *Closed self-ventilated motor*
 - *Protection: IP44*
 - *Insulation class F*
 - *Single-phase feeding 230V-50Hz, with thermal protection and permanently connected capacitor*
 - *Three-phase feeding 230/400V-50Hz, with protection at user's care*

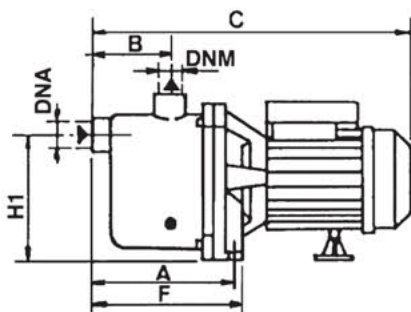
LIMITI DI IMPIEGO / OPERATING CONDITIONS

- Pressione massima d'esercizio: 6 bar
 - Temperatura liquido pompato fino a 50°C
-
- *Max. working pressure: 6 bar*
 - *Max. pumped liquid temperature 50°C*

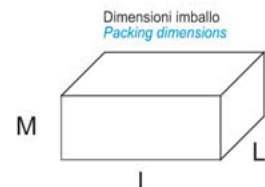
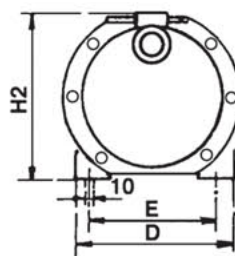


CARATTERISTICHE TECNICHE 2900 GIRI / TECHNICAL PERFORMANCE AT 2900 RPM

| Modello Model | | Pot. nominale Nominal power | | AMPERE | | Q=Portata - capacity | | | | |
|--|---|--------------------------------|----------|----------------------------------|--------------------------------|----------------------|-----|-----|-----|----|
| Monofase Single-phase 230V 50Hz | Trifase Three-phase 230/400V 50Hz | Hp P2 | kW P2 | Monofase Single-phase 230V | Trifase Three-phase 400V | m³/h 0,6 | 1,2 | 1,8 | 2,4 | 3 |
| | | | | | | l/min 10 | 20 | 30 | 40 | 50 |
| Prevalenza manometrica totale in m C.A. Total head in meters w.c. | | | | | | | | | | |
| INOX 80 | INOX 80t | 0,8 | 0,59 | 3,7 | 1,4 | 39 | 32 | 20 | 11 | |
| INOX 100 | INOX 100t | 1,0 | 0,74 | 4,6 | 2,2 | 43 | 38 | 32 | 26 | 15 |
| INOX 100N * | - | 1,0 | 0,74 | 4,6 | - | 43 | 38 | 32 | 26 | 15 |



INOX 80-100-100N



| MODELLO POMPA PUMP'S MODEL | DIMENSIONI POMPA mm PUMP'S DIMENSIONS mm | | | | | | | | | | DIMENSIONI IMBALLO mm PACKING DIMENSIONS mm | | | PESO WEIGHT kg |
|-------------------------------|---|----|-----|-----|-----|-----|-----|-----|-----|-----|--|-----|-----|----------------------|
| | A | B | C | D | E | F | H1 | H2 | DNA | DNM | I | L | M | |
| INOX 80 | 165 | 79 | 360 | 175 | 140 | 175 | 150 | 199 | 1"G | 1"G | 400 | 210 | 235 | 8,7 |
| INOX 100 | 165 | 79 | 360 | 175 | 140 | 175 | 150 | 199 | 1"G | 1"G | 400 | 210 | 235 | 9,9 |
| INOX 100N | 163 | 81 | 370 | 176 | 140 | 176 | 149 | 200 | 1"G | 1"G | 410 | 211 | 230 | 10,5 |